

A SMART BARRIER IN JUST A FEW MINUTES

Geobrugg GUARD Remote monitoring system

Reduce the number of inspections and increase safety:
The Geobrugg GUARD continuously monitors the condition of your protective structures and informs you about rockfalls, debris flows, avalanches or similar natural hazard events.

BRUGG
Geobrugg 

Safety is our nature

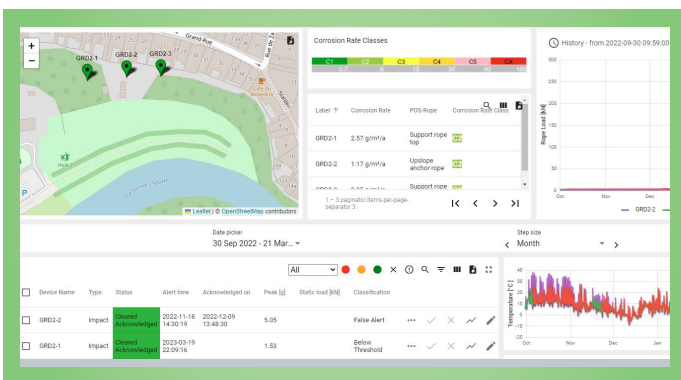
Is the barrier OK? Look online!



The Geobrugg GUARD lives up to its name: This smart device monitors your protective structures by providing the most important information. With an installation time of under five minutes, online monitoring becomes almost instant, ensuring the condition of your protective structures is always only one click away.

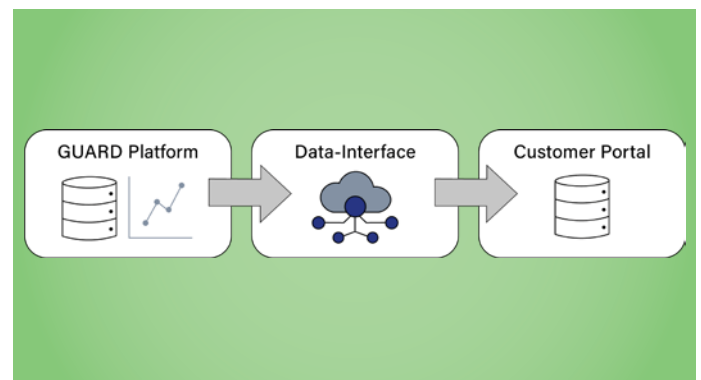
The Geobrugg GUARD is a compact sensor unit that works wirelessly and without an external power supply on a suspension cable of a flexible net barrier. In doing so, it transmits environmental and physical data via a mobile phone network for condition monitoring.

As individual as your needs - the GUARD platform



Online platform

The data is clearly displayed on an online platform and provides the most important information about the current condition of your protective structures. If there is an event, such as a rockfall, you will be informed by e-mail and SMS, depending on your individual settings. With accurate data points you're able to assess events and respond accordingly.



Display according to your requirements

A data interface (Rest-API) gives you the option of transmitting your GUARD measurement data directly to your portal. If you use other remote monitoring systems, you're able to view all information on one portal.

Everything important in one sensor package



Dynamic impacts

Accelerometers measure dynamic impacts and provide information about the impact strength of an event.

Corrosion

A specially developed sensor measures the corrosion rate within the microclimate of the protective lining. Thanks to this data, the remaining service life can be estimated.



Energy supply

The GUARD electronics are designed energy-saving design. The integrated rechargeable battery powers the GUARD for up to 10 years.

Static loads

This data provides information about the degree of filling of the shoring, e.g. with boulders, snow, or other material.

Over a long time, the Geobrugg GUARD monitors **dynamic impacts, static loads, and also corrosion** directly on protective structures. With this information, the operation and maintenance of the protective structures can be better planned, and also the capacity of the protective measure can be maintained in the long term.

Costs are saved in the medium to long term, as fewer inspections are necessary. Safety is increased because employees only need to be in dangerous areas to a limited extent.

The easy way to a smart barrier



5-minute installation

Tighten the two nuts on the wire rope clamp with a torque wrench, scan the QR code with your mobile phone, and install it via the web app - and the Geobrugg GUARD is ready to work!



From sensor to online portal -

for all protective structures, everything from a single source

We provide everything - from the monitoring device to the online portal. The GUARD works on protective structures based on flexible networks - regardless of the signal provider.



WE DON'T LEAVE SAFETY TO CHANCE

Together with the Institute for Materials Technology WITG, we put the system through its paces. Both the corrosion sensor and the sensor unit as a whole. In climatic chambers as well as on an offshore island. World-wide, more than 400 GUARD units have been working out in the elements for years. The successful tests and long-term experience are the basis for the user-friendly and reliable function of this smart remote monitoring solution.



Geobrugg AG

Aachstrasse 11 • 8590 Romanshorn • Switzerland
www.geobrugg.com

The Geobrugg GUARD:
www.geobrugg.com/GUARD



Your local Geobrugg specialist:
www.geobrugg.com/contacts

